

CSV4

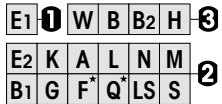
**Multifunction time relay with 16 functions and 8 time ranges 0.8 ms ... 60 h
DIN Rail mounting according to DIN 43 880**

Type: CSV4/DC12-36V

16 timing functions
6 A C.O. relay output
Power supply DC 12 ... 36 V
Option for external fine adjustment time range potentiometer
LED state indicators for output and control input

Maximum output load 1.5 A / 24 V

Time functions and related connection diagrams (Function diagrams: refer to page 152)



Time data

8 partial time ranges, t_{max} (rotary switch)	10 ms / 0,1 s / 1 s / 10 s / 1 m / 10 m / 1 h / 10 h
Time range tolerance	t_{min} : -5 % ... +0 % / t_{max} : -0 % ... +5 %
Repetition accuracy	± 0.1 % or 0,2 ms
Response time, power on, on A1	0,7 ms
Min. trigger pulse on B1	0,15 ms
Reset time B1 (AC/DC)	0,05 ms
Voltage failure buffering	10 ms

Output

Type	MOSFET, PNP
Rated operational current	1.5 A
Max. inrush current (100 ms)	4 A
Max. switching voltage	30 V
Leakage current	10 μ A
Inductive switch-off voltage protection	Yes

Power supply and control input

Nominal voltage	DC 12 – 36 V
Operating voltage range	10,2 ... 45 V
Power consumption	200 mW
Control current into B1	4 mA
Allowed residual current into B1	1 mA
Trigger threshold voltage on B1 typ.	7,3 V

General Specifications

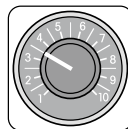
Ambient temperature storage /operation	-40 ... 85 °C / -40 ...70 °C
Conductor cross section	Stranded wire 2.5 mm ² , 2 x 1 mm ²
Ingress Protection degree	IP 20
Max. Screw torque	0.6 Nm
Housing material / Weight	Lexan / 50 g

Standard types CSV4/DC12-36V

Accessories

External potentiometer 100k
(Panel mounting + scale):
Marking strip:

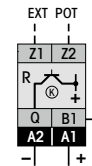
Large **SP-01/100k**
Small **BS-13G**
BS-13K



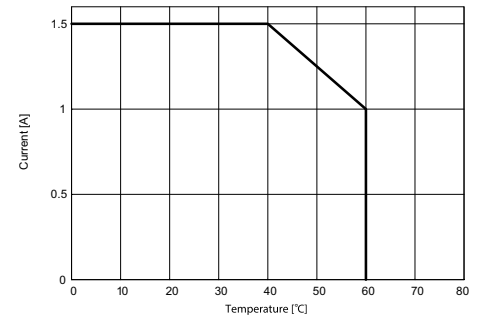
Option:
External
Pot.-Meter
SP-01/100k



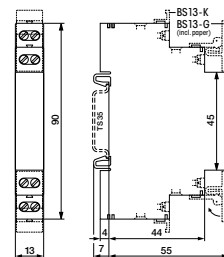
Connection diagram



Output current



Dimensions [mm]



Technical approvals, conformities

