

**S16-M****Socket for 8-pin Relays****Rated Load****10 A / 300 V****Specifications**

Rated impulse withstand voltage

– All terminals / DIN rail

3 kV rms / 1 min

– Terminal / Terminal

3 kV rms / 1 min

– Terminal / Coil

3 kV rms / 1 min

Cross-section of connecting wire

– Single-wire

1 × 0.5 mm<sup>2</sup> / AWG 20

– Multi-wire

1 × 2.5 mm<sup>2</sup> / AWG 14 or 2 × 1.0 mm<sup>2</sup> / AWG 18

Nominal screw torque

0.7 Nm

Screw Dimensions (mm)

M3 Pozzi 1 slot 2

Mounting

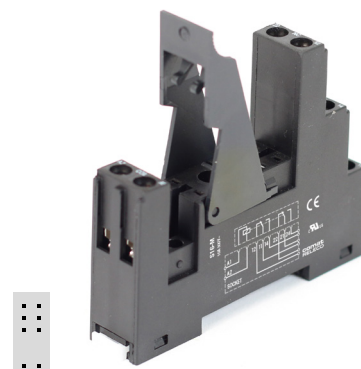
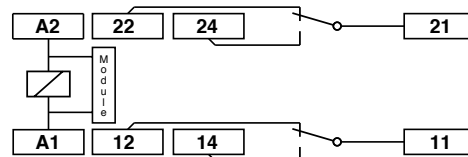
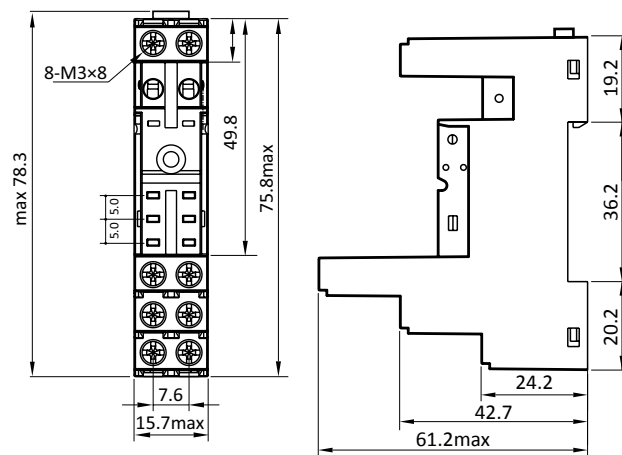
TS-35 or Back Panel Mounting

Ambient temperature

-40...60 °C / -40 ... 80 °C (no ice)

Weight

42 g

**Connection diagram****Dimensions (mm)****Included Accessories**

Retaining / Ejector clip, plastic

CP-16

**Optional Accessories (modules)**

Free wheeling diode

RD16/DC12-240V

Green LED &amp; free wheeling diode, 6-24V DC

RDL16/DC6-24V

Green LED &amp; free wheeling diode, 24-60V DC

RDL16/DC24-60V

Green LED &amp; free wheeling diode, 110-240V DC

RDL16/DC110-240V

Green LED, 6-24V AC/DC

RL16/UC6-24V

Green LED, 24-60V AC/DC

RL16/UC24-60V

Green LED, 110-240V AC/DC

RL16/UC110-240V

RC-Network 6-24V

RC16/UC6-24V

RC-Network 24-60V

RC16/UC24-60V

RC-Network 110-240V

RC16/UC110-240V

**Technical approvals, conformities**