

CT32R

Multifunction | 24 ... 48 V UC | 110 V DC



Time data

Timing functions	fig. 1 2: E, A, K, N, B1 3: E, W, B
Timing range	1.5 s / 6 s / 15 s / 60 s / 1.5 min / 6 min / 15 min / 60 min
Timing scale	0.15 s ... 60 min

Control circuit

Nominal voltage	24 ... 48 V UC	110 V DC
Operating voltage range	19 ... 60 V	77 ... 138 V
Power consumption AC / DC	0.3 VA / 0.3 W	- / 0.3 W
Typ. threshold voltage on command input AC / DC	9 V	60 V

General data

Ambient temperature storage	-40 ... 85 °C
Ambient temperature operation railway version	-40 ... 70 °C
Module width	fig. 2
Weight	25 g
Protection degree	IP 20
Housing material	PC

Product references

Types	Product reference	24-48 110
DC supply	CT32R/DC...V	✓
UC supply	CT32R/UC...V	✓

"..." list control circuit voltage to complete product references.
Other voltages on request. Please contact support@comatreleco.com.

Accessories

Sockets	S3-M0, S5-M
Transparent front cover	FS-C



fig. 1. Wiring diagram

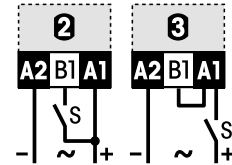
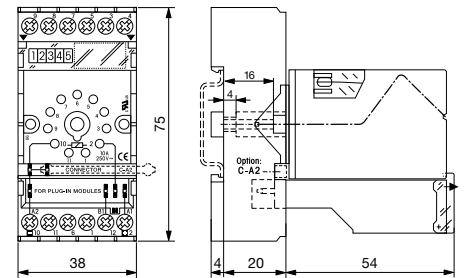


fig. 2. Dimensions (mm)



Standards and approvals

Standards IEC/EN 50155

Approvals