

**C55**

**Multifunction | 24 ... 60 V UC | 110 ... 240 V UC | 2 CO**



**Time data**

Timing functions	fig. 1 2: E, A, K, W, H, N, M, B, G, F, Q, I, P 3: E, W, H, B, I, P 4: U, V
Timing range	0.01 s ... 60 d
Timing scale	digital

**Main circuit**

Number of contacts	2 CO
Contact Material	AgNi
Rated voltage	250 V
Rated current	5 A
Minimum load	10 mA, 12 V
Inrush current	10 A, 10 ms
Rated load DC	fig. 2
Rated load AC-1	1250 VA
Mechanical endurance (cycles)	5 x 10 <sup>6</sup>
Electrical endurance at rated load AC-1 (cycles)	fig. 3

**Control circuit**

Nominal voltage	24 ... 60 V UC	110 ... 240 V UC
Operating voltage range	19 ... 75 V	88 ... 265 V
Power consumption AC / DC	2 VA / 2 W	
Typ. input current on command input AC / DC	6.3 / 6.3 mA	4.2 / 4.2 mA
Typ. threshold voltage on command input AC / DC	10 V / 10 V	40 V / 40 V
Rated frequency	48 ... 400 Hz	48 ... 400 Hz

**Insulation**

Rated test voltage control / main circuit	2 kV rms / 1 min
Rated test voltage main / main circuit	2 kV rms / 1 min
Rated test voltage open contact	1 kV rms / 1 min
Pollution degree	2
Overvoltage category	III

**General data**

Ambient temperature storage	-40 ... 85 °C
Ambient temperature operation	-25 ... 60 °C
Module width	fig. 4
Weight	80 g
Protection degree	IP 20
Housing material	PC

**Product references**

Types	Product reference	24-60	110-240
UC supply	C55/UC...V	✓	✓

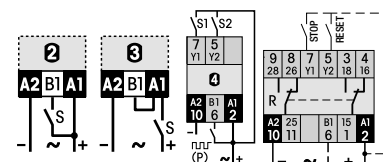
"..." list control circuit voltage to complete product references.  
Other voltages on request. Please contact support@comatreleco.com.

**Accessories**

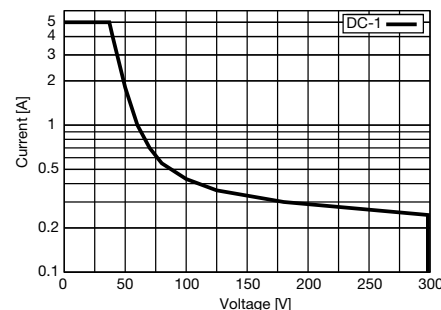
Sockets	S3-M
Retaining clip	HF-50
Transparent front cover	FA-50
Front panel mounting set	FZ-50L



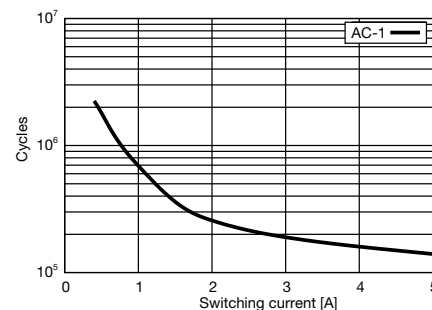
**fig. 1. Wiring diagram**



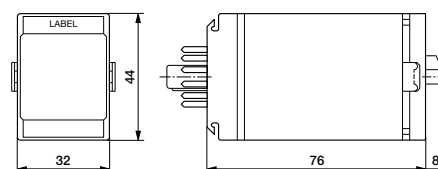
**fig. 2. DC load limit curve**



**fig. 3. AC voltage endurance**



**fig. 4. Dimensions (mm)**



**Standards and approvals**

Standards IEC/EN 60947

Approvals