

## C55.3

Multifunction | 24 ... 60 V UC | 110 ... 240 V UC | 1 Mosfet AC and DC

### Time data

Timing functions	fig. 1 2: E, A, K, W, H, N, M, B, G, F, Q, I, P 3: E, W, H, B, I, P 4: U, V
Timing range	0.01 s ... 60 d
Timing scale	digital

### Main circuit

Number of outputs	1 NO
Output type	➊ Mosfet AC and DC
Output voltage range	10 ... 265 V
Rated current	0.5 A
Minimum load	1 mA, 10 V
Inrush current	6 A, 2 us
Rated load AC-1	132 VA
Mechanical endurance (cycles)	∞
Electrical endurance at rated load AC-1 (cycles)	∞
Electrical endurance at rated load DC-1 (cycles)	∞

### Control circuit

Nominal voltage	24 ... 60 V UC	110 ... 240 V UC
Operating voltage range	19 ... 75 V	88 ... 265 V
Power consumption AC / DC	2 VA / 2 W	
Typ. input current on command input AC / DC	6.3 / 6.3 mA	4.2 / 4.2 mA
Typ. threshold voltage on command input AC / DC	10 V / 10 V	40 V / 40 V
Rated frequency	48 ... 400 Hz	48 ... 400 Hz

### Insulation

Rated test voltage control / main circuit	2 kV rms / 1 min
Pollution degree	2
Overvoltage category	III

### General data

Ambient temperature storage	-40 ... 85 °C
Ambient temperature operation	-25 ... 60 °C
Module width	fig. 2
Weight	80 g
Protection degree	IP 20
Housing material	PC

### Product references

Types	Product reference	24-60	110-240
UC supply	C55.3/UC...V	✓	✓

"..." list control circuit voltage to complete product references.  
Other voltages on request. Please contact support@comatreleco.com.

### Accessories

Sockets	S3-M
Retaining clip	HF-50
Transparent front cover	FA-50
Front panel mounting set	FZ-50L



fig. 1. Wiring diagram

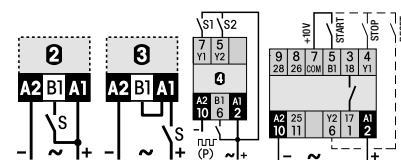
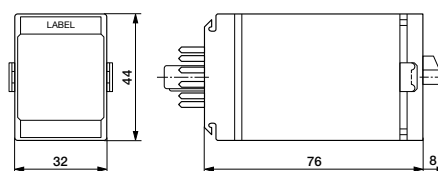


fig. 2. Dimensions (mm)



### Standards and approvals

Standards	IEC/EN 60947
Approvals	CE EAC