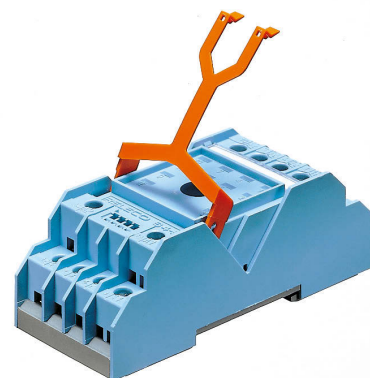
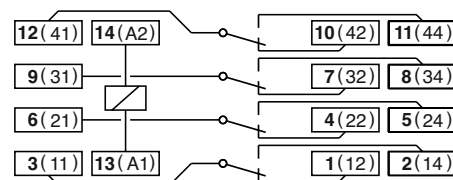
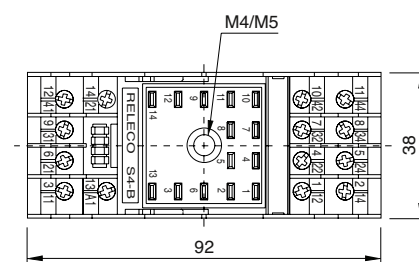
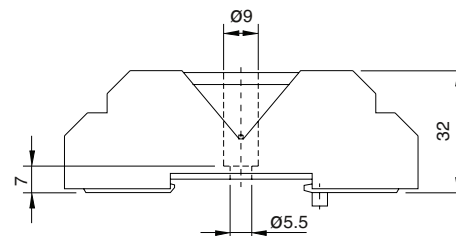


|  |  |
|--|--|
| <b>Type</b>                                  | <b>S4-J</b><br>4-pole, 2 connection level<br>Logic wiring<br>Integrated retaining clip and labelling space |
| <b>Rated current</b>                         | <b>10 A</b>  |
| <b>Specifications</b>                        |  |
| Rated load                                   | 10 A / 250 V   |
| Insulation                                   | Test voltage V rms / 1 min   |
| – All terminals/DIN rail                     | 2,5 kV   |
| – Terminal/terminal                          | 2,5 kV   |
| Cross-section of connecting wire             |  |
| – Single-wire                                | 4 mm <sup>2</sup> or 2 x 2,5 mm <sup>2</sup>   |
| – Multi-wire                                 | 22 - 14 AWG  |
| Max. screw torque                            | 1 Nm   |
| Screw dimensions                             | M3,5, Philips-slot (combo)   |
| Integrated retaining clip/plastic            | for relay series C4  |
| Labelling space                              | detachable   |
| Connection label                             | 1...14; DIN/EN   |
| Mounting                                     | DIN rail TS35 or mounting plate  |
| Ambient temperature                          | -40 (no ice)...60 °C / -40 ... 80 °C   |
| Weight                                       | 80g  |
| <b>Associated, plug-in 11-pin MRC relays</b> | <b>C4-A, C4-X, C4-R</b>  |
| <b>Accessories</b>                           |  |
| Retaining spring, steel                      | <b>S4-C</b>  |
| Retaining clip, plastic                      | <b>CP-15B</b>  |

**Connection diagram****Dimensions [mm]****Technical approvals, conformities**