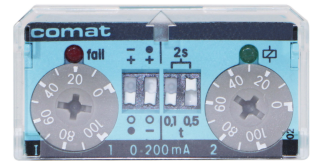


CT30, CT32, CT33, CT36

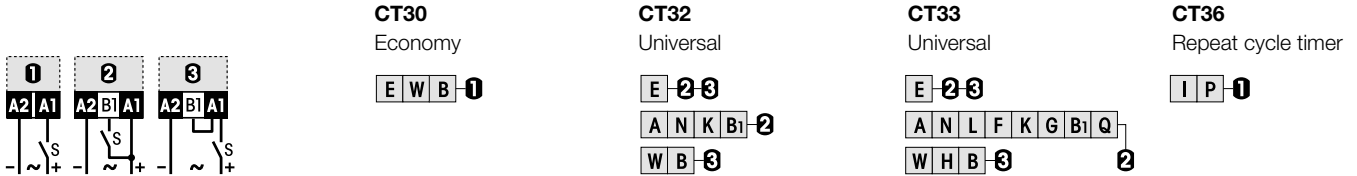
Plug-in time modules (combined with industrial relays)

Type **CT30, CT32, CT33, CT36, /...V R**

Plug-in time modules for sockets with module slot in combination with plug-in relays.
Power supply and control voltages 24 ... 240 V. Time ranges 30 ms up to 60 h.
LED output state indicator.



Time functions and related connection diagrams (Function diagrams: refer to page 152)



Time data

Type	CT 30	CT 32	CT33	CT36
Partial time ranges, t_{max}	3, 30 /s /min	1.5, 6, 15, 60 /s /min	150, 600 ms	2 x 600 ms
Min. time t_{min}	0.25 s	0.15 s	1.5, 6, 15, 60 /s /min /h	2 x 6, 60 /s /min /h
Fine adj. range $t_{min} \dots t_{max}$	2.5 ... 30	1 ... 10	30 ms	2 x 50 ms
Time range tolerance t_{min}	-25 ... 0 %	-25 ... 0 %	0.2 ... 1	2 x 5 ... 60
t_{max}	0 ... 35 %	0 ... 25 %	-25 ... 0 %	-25 ... 0 %
Repetition accuracy	± 0.2 % or 20 ms	± 0.2 % or 20 ms	0 ... 25 %	0 ... 25 %
Temperature drift of time	0.25 % / K	± 0.1 % / K	± 0.2 % or 20 ms	± 0.2 % or 20 ms
Min. trigger pulse width B1	-	≥ 30 ms	0.1 % / K	0.1 % / K
Reset time pow. supply	≤ 200 ms	≤ 150 ms	≥ 30 ms	-
Voltage failure buffering	≥ 20 ms	≥ 20 ms	≤ 150 ms	≤ 150 ms
			≥ 20 ms	≥ 20 ms

Output data

Nominal voltage	UC 24 – 48 V	110 – 240, 115, 230 V
Type	Solid state	Solid state
Rated operational current	150 mA	50 mA
On-state resistance	$\leq 25 \Omega$	$\leq 100 \Omega$
Leakage current	$\leq 150 \mu A$	$\leq 150 \mu A$

Power supply and control input (UC = AC / DC)

Type	CT 30	CT 30	CT36	CT36
Nominal voltage	UC 24 – 48 V	UC 110 – 240 V	UC 24 – 48 V	UC 110 – 240 V
Operating voltage range	19 ... 75 V	90 ... 265 V	19...60 V	82 ... 265 V
Supply current	3 ... 5 mA	2 ... 4 mA	6 ... 12 mA	4 ... 8 mA
Type	CT32, CT33	CT32, CT33	CT32, CT33	
Nominal voltage	UC 24 – 48 V	UC 115 V	UC 230 V	
Operating voltage range	19 ... 60 V	90 ... 150 V	180 ... 265 V	
Input B1 inactive	≤ 9 V	≤ 60 V	≤ 100 V	
Supply current	5 ... 11 mA	4 ... 7 mA	1 ... 4 mA	

General Specification

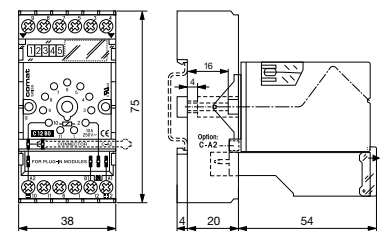
Ambient temperature storage /operation	-40 ... 85 °C / -40 ... 60 °C
Ingress Protection degree	IP 40 when plugged in
Housing material	Lexan
Weight	25 g

Standard types

CT30, CT32, CT33, CT36, UC24-48	CT3x/UC24-48V R
CT30, CT36, UC110-240	CT3x/UC110-240V R
CT32, CT33, UC115	CT3x/UC115V R
CT32, CT33, UC230	CT3x/UC230V R

Remark: This module is part of several ready for connection units consisting of socket, relay and module. A wide range of suitable relays are available.

Dimensions [mm]



Technical approvals, conformities

