

# CS2

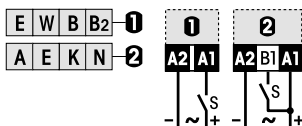
## 11 pin plug-in time relay according to IEC 67-I-18a, 50 ms ... 60 h for wide band 12 ... 240 V operating voltage, internal or external potentiometer operation

### Type: CS2/UC 12-240V R

- Plug-in time relay
- 1 change over contact
- UC 12-240 V operating voltage
- 7 time functions, time ranges: 50 ms ... 60 h
- LED for output state indication
- Option for external fine adjustment time range potentiometer

<b>Maximum contact load</b>	<b>8 A / 250 V AC-1</b>
<b>Recommended minimum contact load</b>	<b>10 mA / 10 V</b>

### Time functions and related connection diagram (Function diagrams: refer to page 152)



**External potentiometer pins 5, 7**  
1 M $\Omega$  (see accessories)  
**Max. potentiometer cable length**  
50 m, shielded, GND on pin5 (Z1)

### Time data

7 partial time ranges, $t_{max}$ (DIP switch)	0.6, 6, 60 s / 6, 60 min / 6, 60 h
Fine adjustment range (rotary knob)	$t_{min} \dots t_{max}$ , 5 ... 60
Time range tolerance	$t_{min}$ : -5 % ... +0 % / $t_{max}$ : -0 % ... +5 %
Repetition accuracy	$\pm 0.1$ % or DC: 2 ms / AC: 10 ms
Min. trigger impulse on B1	$\geq 30$ ms
Reset time	$\leq 30$ ms
Voltage failure buffering	20 ms

### Contacts

Type	1 CO, micro disconnection
Material	AgNi
Rated operational current	8 A
Max. switching voltage AC-1	250 V
Max. AC load AC-1 (Fig.1)	2000 VA
Max. DC load DC-1, 30 V / 250 V (Fig.2)	220 W / 75 W

### Power supply- and control input (UC = AC / DC)

Nominal voltage (A1, B1)	<b>UC 12 ... 240 V</b>
Operating voltage range	10.2 ... 265 V
Power consumption	$\leq 1.4$ W
Frequency range	45 ... 63 Hz
Allowed residual current into B1 AC / DC	$\leq 2.3$ mA / 1.2 mA
Trigger threshold voltage on B1, AC / DC	6.5 V / 7 V

### Insulation

Test voltage open contact	1 kVrms 1 minute
Test voltage between contacts and control input	2 kVrms 1 minute

### General Specifications

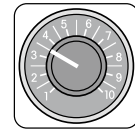
Ambient temperature storage /operation	-40 ... 85 °C / -25 ... 60 °C
Mechanical life of contacts	$\geq 30 \times 10^6$ operations
Ingress protection degree	IP 40 when plugged in
Housing material / Weight	Lexan / 75 g

### Standard types

<b>UC (AC/DC)</b>	<b>CS2/UC12-240V R</b>
-------------------	------------------------

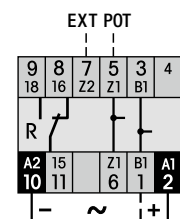
### Accessories

External potentiometer 1 M (Panel mounting + scale)	<b>SP-01/1M</b>
Socket	<b>S3-xx</b>
Retaining clip	<b>HF-50</b>
Transparent front cover	<b>FA-50</b>
Front panel mounting set	<b>FZ-50L</b> (Frame + retaining clip + socket with soldering connections)

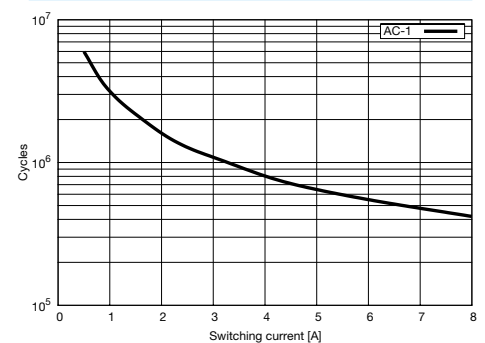


Option:  
External  
Pot.-Meter  
SP-01/1M

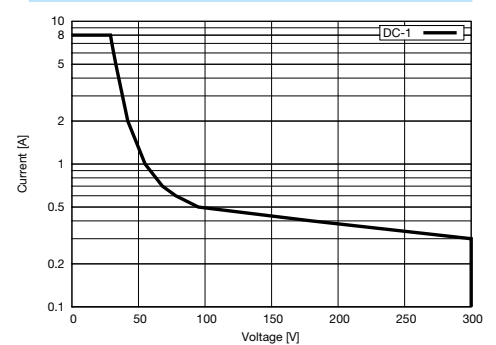
### Connection diagram



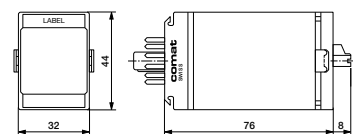
**Fig.1 AC electrical endurance**



**Fig. 2 DC load limit curve**



### Dimensions [mm]



### Technical approvals, conformities



EN 60947