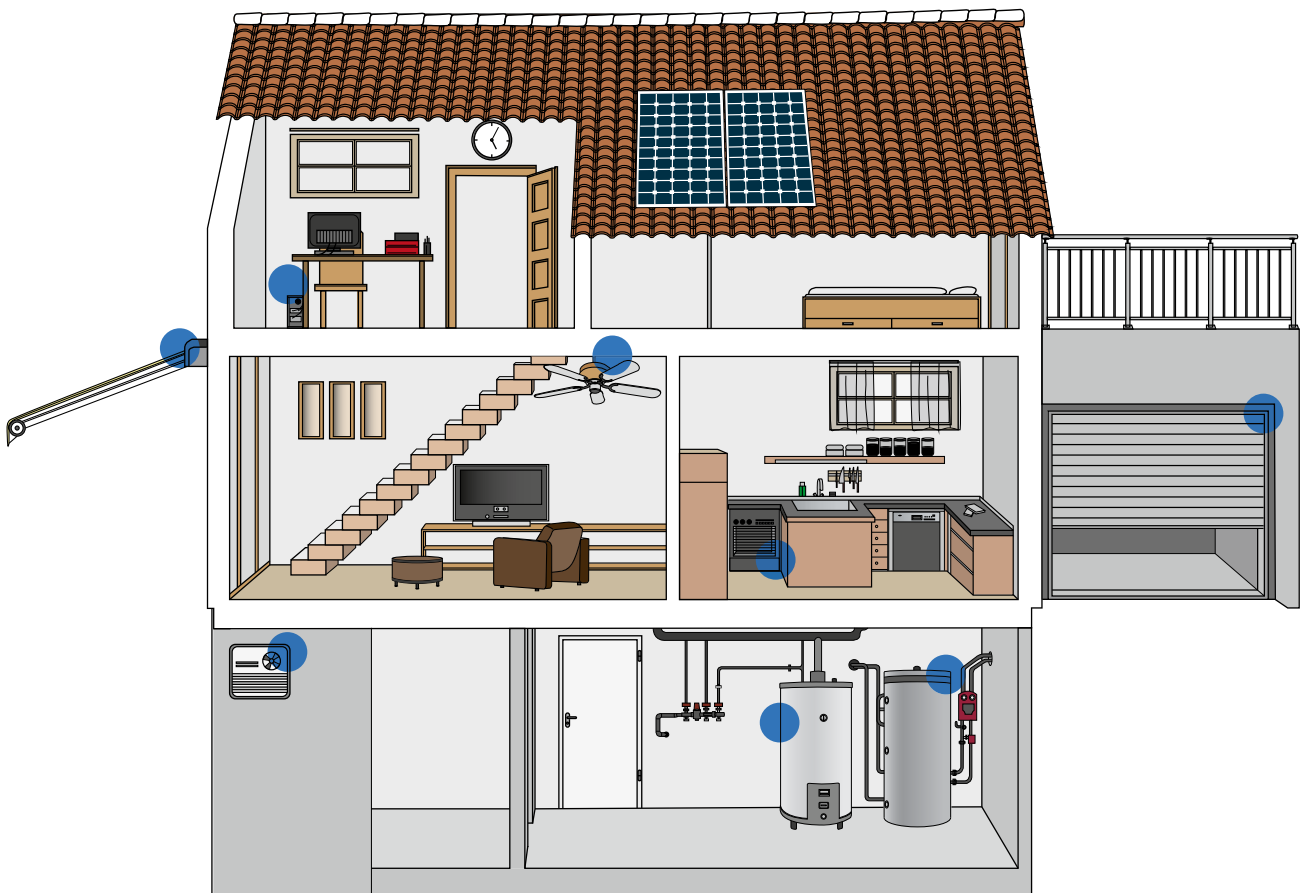


5.0 SMS Relay



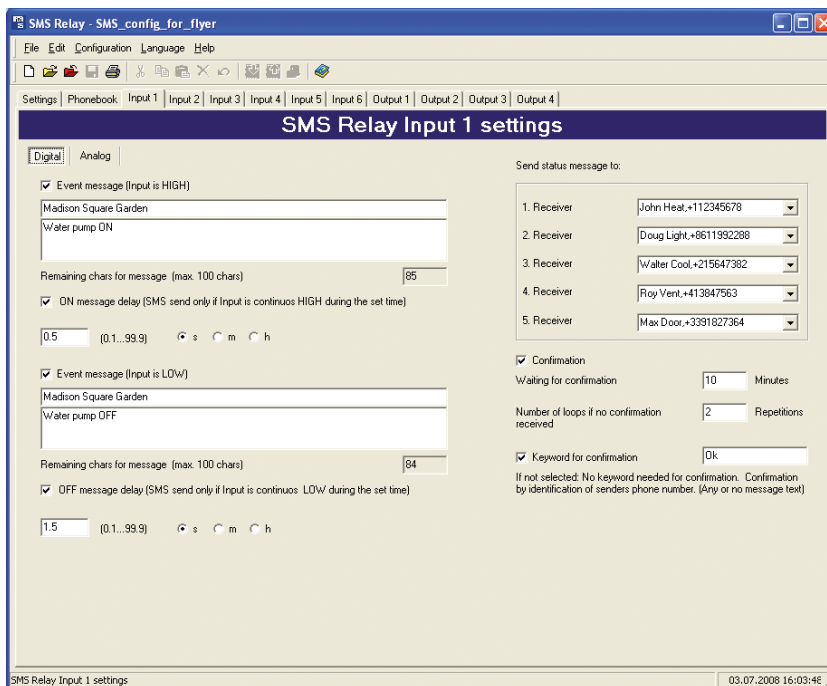
- Easy configuration with PC and «FAST SMS SET™» configuration software
- Sequential alert messaging to 5 different subscribers
- Analog and/or digital inputs
- Monitoring of all inputs and outputs with SMS messaging
- Request of analogue values by SMS
- Remote control of outputs by SMS
- Power failure notification by SMS messaging
- Status change messages by SMS
- User defined message text
- Remote access and status display by PC/Notebook
- Call-In Function
- Alarm messages by e-mail
- App for Android operated smartphones



Monitoring | Alerting | Controlling



Digital Inputs

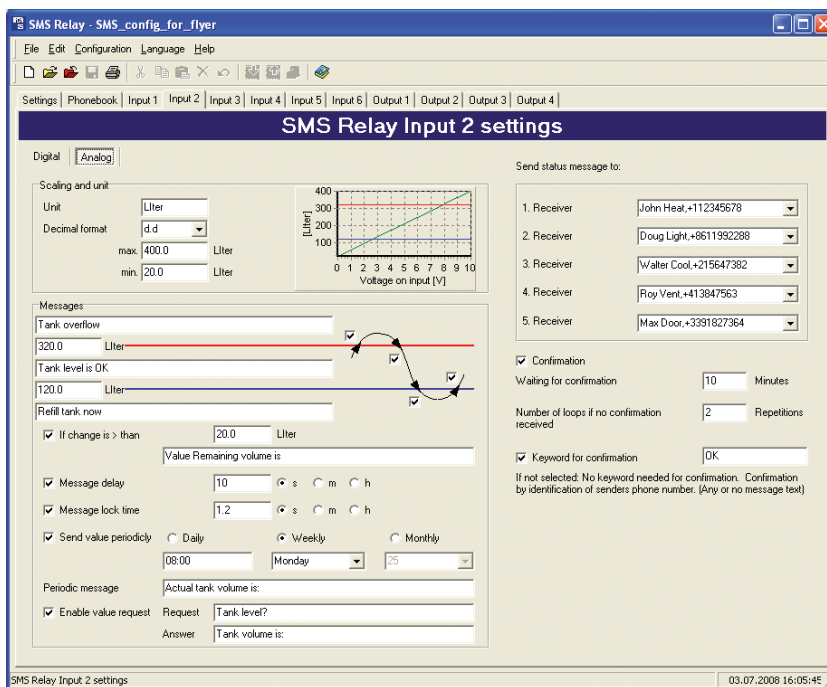


Language



Analog Inputs

- ✓ Free selectable units e.g.: l, kg, m³, psi, F, sqm, lbs
- ✓ Any min/max value can be defined. Scale adjustment automatic
- ✓ Value inquire by SMS
- ✓ Automatic alerting if min/max values are exceeded
- ✓ Status display on PC/Notebook via GSM network



One touch to have everything under control

Comat is presenting an app making handling, controlling, monitoring and remote switching of a SMS-Relay even more easily and clearly presented. Switch on your heating, open your garage door or irrigate your lawn simply by clicking a button. Your smart phone is thereby your remote control. After installation and configuration the SMS Relay from Comat and after download and installation of the App from Google Playstore, just import the device configuration data to your smart phone, enter the phone number of the device and it is ready for use.

You will find a specific instruction on our website www.comat.ch

With the Android App the display of all input states and the switching of the outputs is simple. It's available for download, free of charge in Google Playstore.

Characteristics

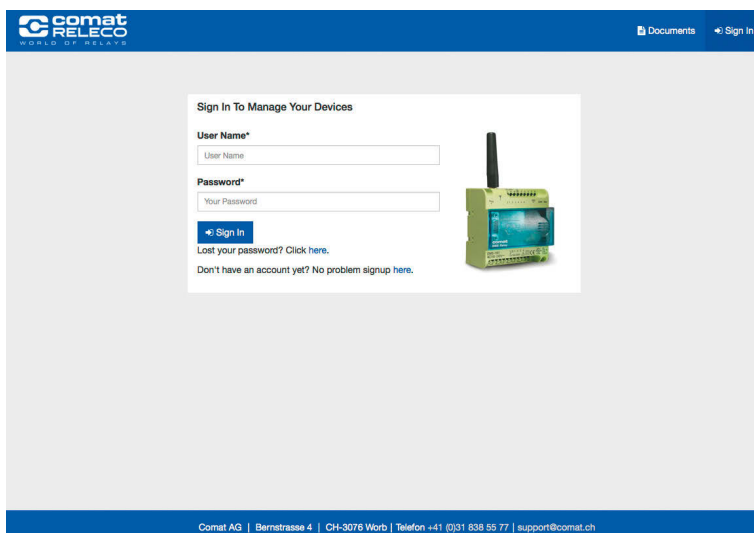
- Polling of input values
- Easy control of outputs
- Status display
- Monitoring of alarm history
- Simultaneous control of multiple SMS Relays



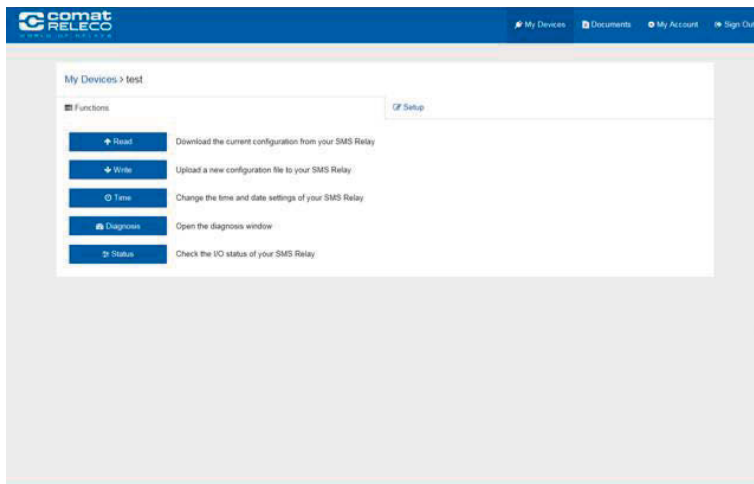
Attention!

The Android App simplifies the operation of the SMS Relay. The communication in the background is by chargeable text message.

Login screen



Function overview



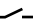
Remote maintenance

The remote maintenance of the SMS Relay is performed via the Internet. Multiple SMS Relay can be managed from anywhere by a web access on the SMS Relay remote access portal.

- Upload / download the configuration file
- Diagnosis (signal strength, provider information, device information)
- Date / Time settings
- Monitoring inputs and switching outputs

Please find more information on our website www.comat.ch.

Technical Data's

Typ	CMS-10F/AC110-240V	CMS-10F/DC12-48V	CMS-10ADF/DC12-48V	CMS-10ACDF/DC12-48V
Operating voltage	AC 110-240V~ 50/60 Hz	DC 12-48V= max. 10%	DC 12-48V= max. 10%	DC 12-48V= max. 10%
Power consumption	8VA/6W	4,2W	4,2W	4,2W
Switching capacity 	4 x 10 A 250V; Sum of current max. 20A			
Temperature range	Tu: -25...+55° C; Rel. humidity: 10...95% (non condensing); Protection IP 20			
Inputs	6 x digital (trigger level 85V~)	6 x digital (trigger level 9,5V=)	6 x digital and/or analog (trigger level 9,5V=) (analog 0-10V=)	2 x analog (4-20 mA) 4 x digital and/or analog (trigger level 9,5V=) (analog 0-10V=)
Outputs	4 x CO contacts μ 10A/250V AC-1			
Provider (Phone/Network)	User selectable (dependent on SIM card)			
Frequency	GSM QuadBand (850; 900; 1800; 1900 MHz)			

Installation note

The base unit device is delivered fully operational and includes the small aerial CMS-ANT.

Before installation, the final location of installation must be taken into consideration.

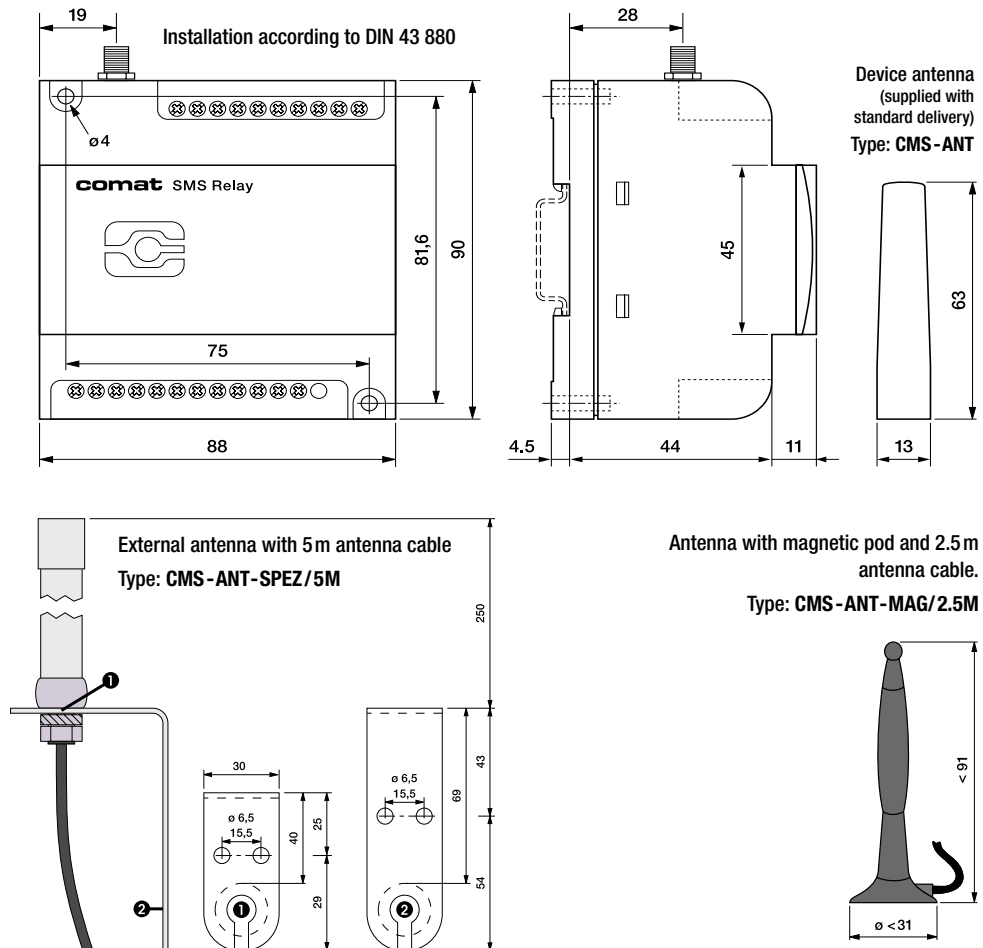
For installation inside a control panel, the small device aerial may not be suitable and needs to be replaced

by the antenna with magnetic pod (CMS-ANT-MAG/2.5M) or by the external antenna (CMS-ANT-SPEZ/5M).

These two antennas provide considerably better results and improve communication with the mobile network.

Please ask our product specialists if you require any support.

Dimensions



Typ	Description
CMS-10F/AC110-240V	SMS Relay AC 110-240V with 6 digital inputs incl. small antenna (CMS-ANT)
CMS-10F/DC12-48V	SMS Relay DC 12-48V with 6 digital inputs incl. small antenna (CMS-ANT)
CMS-10ADF/DC12-48V	SMS Relay DC 12-48V with 6 digital and analog inputs incl. small antenna (CMS-ANT)
CMS-10ACDF/DC12-48V	SMS Relay DC 12-48V with 2 analog current inputs and 4 analog and/or digital voltage inputs, incl. small antenna (CMS-ANT)
KIT consisting of: A base unit with small antenna, antenna with magnetic pod and 2.5 m cable, programming cable, USB-RS232 Interface connector, CD with «FAST SMS SET™» -up programming software and operation manual	
CMS-10FKIT/AC110-240V	Installation kit complete with 6 digital inputs (SMS Relay AC 110-240V)
CMS-10FKIT/DC12-48V	Installation kit complete with 6 digital inputs (SMS Relay DC 12-48V)
CMS-10ADFKIT/DC12-48V	Installation kit complete with 6 digital and/or analog inputs (SMS Relay DC 12-48V)
CMS-10ACDFKIT/DC12-48V	SMS Relay Kit DC 12-48V with 2 analog current inputs and 4 analog and/or digital voltage inputs
Accessories	
CMS-RS232	SMS Relay programming cable RS232
CMS-USB	USB-RS232 interface connector (including driver CD)
CMS-ANT	Small spare antenna for base unit, 63mm long
CMS-ANT-MAG/2.5M	Antenna with magnetic pod and 2.5m antenna cable
CMS-ANT-SPEZ/5M	External antenna with 5m antenna cable
CMS-ANT-KAB/5M	Antenna cable 5m (extension)
CMS-ANT-KAB/10M	Antenna cable 10m (extension)
CMS-ANT-KAB/20M	Antenna cable 20m (extension)
CMS-CAP	Device cover (spare)
CMS-CD	CD with FAST SMS SET -up programming software and manual
DR-15-24	Power supply 15W, 24V. DIN-rail mounting
DR-30-24	Power supply 36W, 24V. DIN-rail mounting
ZPT-10-H	PT100/PT1000 Amplifier
RF01-U	Room temperature sensor 0...50 °C without display
RF01-U-D	Room temperature sensor 0...50 °C with display
RTBSB-001-010	Room thermostat 5...30 °C with operating controls
WF50 ext-U	Outdoor temperature sensor -50...+50 °C
KS-110	AC sensor for monitoring of humidity and temperature in control panels, archives and cabinets
PS1	Water gauge suitable for application of level measurements in water installations



Type

CMS-10F/...
CMS-10ADF/...
CMS-10ACDF/...

SMS Relay

- SMS Relay incl. small antenna 63 mm
- WITHOUT programming cable, magnetic pod antenna, USB converter and programming software
- Suitable for user which already possess the accessories



CMS-10FKIT/...
CMS-10ADFKIT/...
CMS-10ACDFKIT/...

SMS Relay KIT

- SMS Relay incl. small antenna 63 mm
- Including programming cable, magnetic pod antenna with 2.5 m cable, USB converter USB-RS232, and programming software "FAST SMS SET™" with manual
- Suitable for user first user

Type



DR-15-24

Power supply

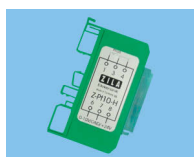
- Input
 - Voltage range: 85 - 264V AC, 120 - 370V DC
 - Frequency range: 47 - 63 Hz
 - Max. current: 0,88 A
- Output
 - DC Nominal voltage: 24 V
 - Setting range: 21,6 - 26,4 V
 - Power range: 0 - 0,63 A
 - Nominal load: 15,2 W



DR-30-24

Power supply

- Input
 - Voltage range: 85 - 264V AC, 120 - 370V DC
 - Frequency range: 47 - 63 Hz
 - Max. current: 0,88 A
- Output
 - DC Nominal voltage: 24 V
 - Setting range: 21,6 - 26,4 V
 - Power range: 0 - 1,5 A
 - Nominal load: 36 W



ZPT-10-H

PT100/ PT1000 Amplifier

- Input: PT100; PT1000: 2-, 3- line switching
- Output: 0...10V DC
- Supply voltage: 15...35V DC
- DIN rail mounting



RF01-U

Room temperature sensor without display

- Integrated transducer
- Output: 0...10V DC
- Measuring range: 0°C...50°C
- Supply voltage: 24 V DC



RF01-U-D

Room temperature sensor with integrated display

- Integrated transducer
- Output: 0...10V DC
- Measuring range: 0°C...50°C
- Supply voltage: 24 V DC



RTBSB-001-010

Room thermostat with operating controls

- Suitable for temperature monitoring in closed rooms
- Output: 1 CO
- Setting range: 5°C...30°C
- Supply voltage: 230V AC (24V DC)



WF50 ext-U

Outdoor temperature sensor

- Sensor for temperature measuring outdoors or in industrial storage- or cold chambers
- Output: 0...10V DC
- Measuring range: -50°C...+50°C
- Supply voltage: 15...24V DC
- Protection class: IP65



Type

KS-110

AC sensor for indoors and outdoors

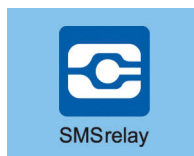
- Measuring of humidity and temperature in control panels, archives and cabinets
- **Temperature**
 - Measuring range: -40°C...+80°C
 - Measuring element: Solid state
 - Output: 0-10V
- **Humidity**
 - Measuring range: 0%...100% relative humidity
 - Measuring element: Capacitive
 - Output: 0-10V



PS1

Level and water gauge

- Suitable for applications in fountains or in water installations up to a depth of 5m (0-0.5 bar)
Additional measuring ranges on request.
- Cable in special design with pressure compensation line
- Output signal: 0-10V, 3-wire
- Application temperature: +5°C bis +70 °C



App SMSrelay

App for Android operated smart phones

The App is available free of charge in the Google Playstore.