

<b>Type</b>	<b>C3-T3x/ ... V</b> Standard relays for low level 3 change-over twin contacts			
<b>Maximum contact load</b>	<b>6 A/250 V</b>	<b>AC-1</b>	<b>6 A/30 V</b>	<b>DC-1</b>
<b>Recommended minimum contact load</b>	<b>5 mA/5 V</b>	<b>Code 1</b>		
	<b>1 mA/5 V</b>	<b>Code 2</b>		

<b>Contacts</b>			
Material	Standard	Code 1	AgNi + 0,2 μ Au
	Optional	Code 2	AgNi + 5 μ Au
Rated current	6 A		
Switch-on current max. (20 ms)	15 A		
Switching voltage max.	250 V		
AC load (Fig 1)	1,2 kVA		
DC load	see Fig. 2		

<b>Coil</b>			
Coil resistance	see table; tolerance ± 10 %		
Pick-up voltage	≤ 0,8 × U <sub>N</sub>		
Release voltage	≥ 0,1 × U <sub>N</sub>		
Nominal power	2,2 VA (AC)/1,3 W (DC)		

<b>Coil table</b>					
VAC	Ω	mA	VDC	Ω	mA
24	67	92	24	480	50
48	296	46	48	1K8	26
115	1K7	19	110	9K	12
230	7K1	9,5	220	36K1	6

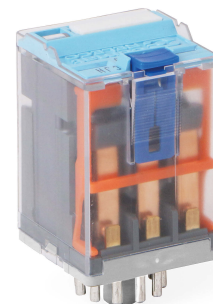
<b>Insulation</b>		Volt rms, 1 min
Contact open	1000 V	
Contact/contact	2,5 kV	
Contact/coil	2,5 kV	
Insulation resistance at 500 V	≥1 GΩ	
Insulation, EN 61810-1	2,5 kV/3	

<b>Specifications</b>	
Ambient temperature operation/storage	-40 ... 70 °C / -40 ... 80 °C
Pick-up time/bounce time	8 ms/≤ 3 ms
Release time/bounce time	18 ms/≤ 1 ms
Mechanical life ops	AC: 10 Mill./DC: 20 Mill.
DC voltage endurance at rated load	≥100000 switching cycles
Switching frequency at rated load	≤ 1200/ops/h
Protection class	IP40
Weight	81 g

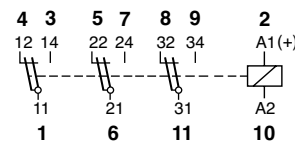
<b>Standard types</b>		
<b>VAC 50 Hz/60 Hz: 24, 48, 115 (120), 230 (240) LED</b>	<b>C3-T31/AC ... V</b> <b>C3-T31X/AC ... V</b>	<b>C3-T32/AC ... V</b> <b>C3-T32X/AC ... V</b>
<b>VDC 24, 48, 110, 220 LED</b>	<b>C3-T31/DC ... V</b> <b>C3-T31X/DC ... V</b>	<b>C3-T32/DC ... V</b> <b>C3-T32X/DC ... V</b>
<b>Free wheeling diode</b>	<b>C3-T31DX/DC ... V</b> <b>C3-T31FX/DC ... V</b>	<b>C3-T32DX/DC ... V</b> <b>C3-T32FX/DC ... V</b>
<b>Polarity and free wheeling diode</b>		
<b>AC/DC bridge rectifier 24 V, 48 V, 60 V</b>	<b>C3-T31BX/UC ... V</b>	<b>C3-T32BX/UC ... V</b>

"..." Enter the voltage for full type designation

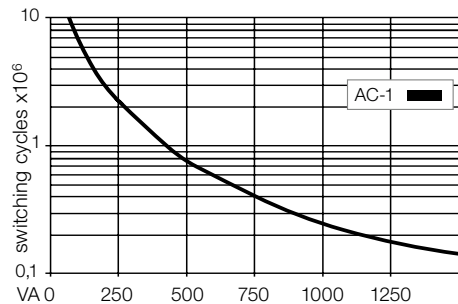
<b>Accessories</b>	
Socket:	<b>S3-B, S3-S, S3-L, S3-P, S3-P0</b>
Optional accessories (blanking plug):	<b>SO-NP, SO-OP</b>
Retaining clip, plastic:	<b>S30-CM</b>



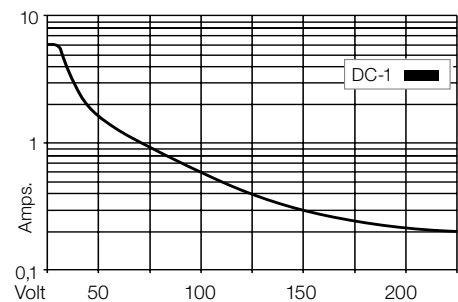
**Connection diagram**



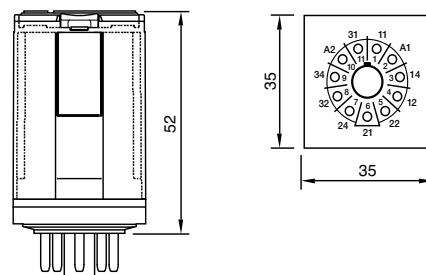
**Fig. 1 AC voltage endurance**



**Fig. 2 DC load limit curve**



**Dimensions [mm]**



**Technical approvals, conformities**

