

<b>Type</b>	<b>C2-A2x/ ... V</b> Standard relay, 2 change-over contacts			
<b>Maximum contact load</b>	<b>10 A/250 V AC-1</b>	<b>0,5 A/110 V DC-1</b>		
	<b>10 A/30 V DC-1</b>	<b>0,2 A/220 V DC-1</b>		
<b>Recommended minimum contact load</b>	<b>10 mA/10 V Code 0, 9</b> <b>5 mA/5 V Code 8</b>			

<b>Contacts</b>			
Material	Standard	Code 0	AgNi
	Optional	Code 8	AgNi + 5 μ Au
	Optional	Code 9	AgNi + 0,2 μ Au
Max. switching current	10 A		
Max. peak inrush current (20 ms.)	30 A		
Max. switching voltage	250 V		
Max. AC load (Fig 1 1)	2,5 kVA		
Max. DC load	See Fig 2		

<b>Coils</b>			
Coil resistance	see table; tolerance ± 10 %		
Pull-in voltage	≤ 0,8 x U <sub>N</sub>		
Pull-in voltage	≥ 0,1 x U <sub>N</sub>		
Nominal power	2,2 VA (AC)/1,3 W (DC)		

<b>Table</b>						
	<b>VAC</b>	<b>Ω</b>	<b>mA</b>	<b>VDC</b>	<b>Ω</b>	<b>mA</b>
	24	67	92	24	443	54
	48	296	46	48	1K8	27
	115	1K7	19	110	9K	12
	230	7K1	9,5	220	36K1	6

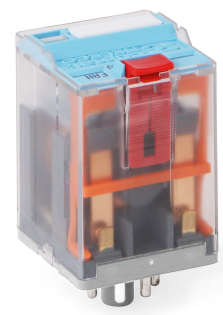
<b>Insulation</b>	Volt rms, 1 min
Open contact	1000 V
Between adjacent poles	2,5 kV
Between contacts and coil	2,5 kV
Insulation resistance at 500 V	≥ 1 GΩ
Insulation, IEC 61810-1	2,5 kV/3

<b>Specifications</b>	
Ambient temperature operation/storage	-40 (no ice)...60 °C / -40 ... 80 °C
Pick-up time + bounce time	16 ms/≤ 3 ms
Release time + bounce time	8 ms/≤ 1 ms
Mechanical life ops	AC: 10 Mill./DC: 20 Mill.
DC voltage endurance at rated load	≥ 100000 ops. switching cycles
Operating frequency at nominal load	≤ 1200/ops/h
Protection degree	IP40
Weight	79 g

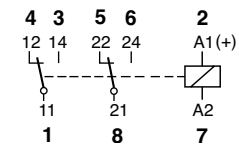
<b>Standard types</b>			
<b>VAC 50 Hz/60 Hz: 24, 48, 115 (120), 230 (240)</b>	<b>C2-A20/AC ... V</b>	<b>C2-A28/AC ... V</b>	<b>C2-A29AC ... V</b>
<b>LED</b>	<b>C2-A20X/AC ... V</b>	<b>C2-A28X/AC ... V</b>	<b>C2-A29X/AC ... V</b>
<b>VDC 24, 48, 110, 220</b>	<b>C2-A20/DC ... V</b>	<b>C2-A28/DC ... V</b>	<b>C2-A29/DC ... V</b>
<b>LED</b>	<b>C2-A20X/DC ... V</b>	<b>C2-A28X/DC ... V</b>	<b>C2-A29X/DC ... V</b>
<b>Free wheeling diode</b>	<b>C2-A20DX/DC ... V</b>	<b>C2-A28DX/DC ... V</b>	<b>C2-A29DX/DC ... V</b>
<b>Polarity and free wheeling diode</b>	<b>C2-A20FX/DC ... V</b>	<b>C2-A28FX/DC ... V</b>	<b>C2-A29FX/DC ... V</b>
<b>AC/DC bridge rectifier 24 V, 48 V, 60 V</b>	<b>C2-A20BX/UC ... V</b>	<b>C2-A28BX/UC ... V</b>	<b>C2-A29BX/UC ... V</b>

"..." Enter the voltage for full type designation

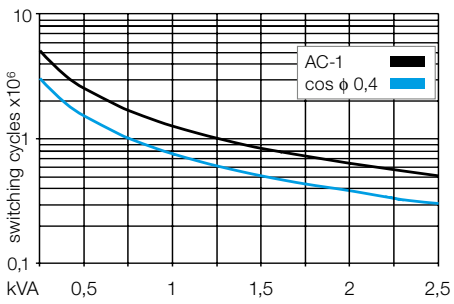
<b>Accessories</b>	
Socket:	<b>S2-B, S2-S, S2-L, S2-P, S2-P0</b>
Optional accessories (blanking plug):	<b>SO-NP, SO-OP</b>
Retaining clip, plastic:	<b>S30-CM</b>



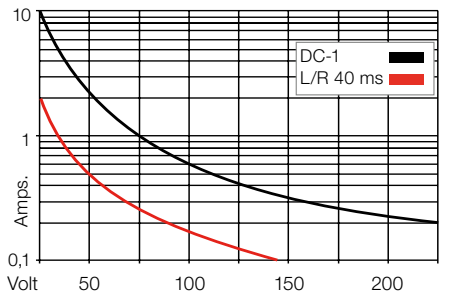
**Connection diagram**



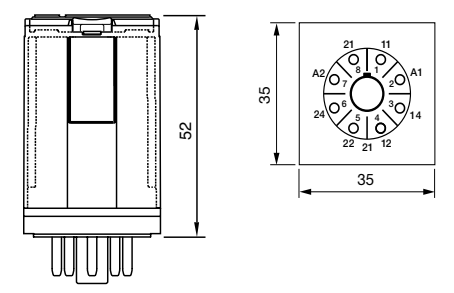
**Fig. 1 AC voltage endurance**



**Fig. 2 DC load limit curve**



**Dimensions [mm]**



**Technical approvals, conformities**

