

CT33R**Multifunction | 24 ... 48 V UC | 115 V UC | 230 V UC****Time data**

| | |
|------------------|--|
| Timing functions | fig. 1 2: E, A, K, N, B1, F, G, Q, L 3: E, W, B, H |
| Timing range | 150 ms / 600 ms / 1.5 s / 6 s / 15 s / 60 s / 1.5 min / 6 min / 60 min / 1.5 h / 6 h / 15 h / 60 h |
| Timing scale | 30 ms ... 60 h |

Control circuit

| | | | |
|---|----------------|----------------|---------------|
| Nominal voltage | 24 ... 48 V UC | 115 V UC | 230 V UC |
| Operating voltage range | 19 ... 60 V | 90 ... 150 V | 180 ... 265 V |
| Power consumption AC / DC | 0.3 VA / 0.3 W | 0.5 VA / 0.5 W | 1 VA / 1 W |
| Typ. threshold voltage on command input AC / DC | 9 V | 60 V | 100 V |

General data

| | |
|---|---------------|
| Ambient temperature storage | -40 ... 85 °C |
| Ambient temperature operation railway version | -40 ... 70 °C |
| Module width | fig. 2 |
| Weight | 25 g |
| Protection degree | IP 20 |
| Housing material | PC |

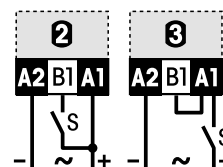
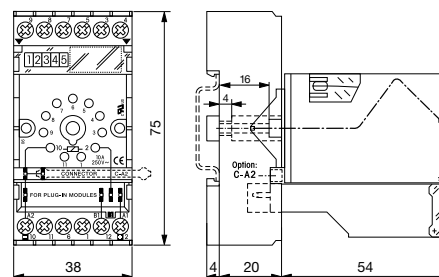
Product references

| Types | Product reference | 24-48 | 115 | 230 |
|-----------|-------------------|-------|-----|-----|
| UC supply | CT33R/UC...V | ✓ | ✓ | ✓ |

"..." list control circuit voltage to complete product references.
 Other voltages on request. Please contact support@comatreleco.com.

Accessories

| | |
|-------------------------|-------------|
| Sockets | S3-M0, S5-M |
| Transparent front cover | FS-C |

**fig. 1. Wiring diagram****fig. 2. Dimensions (mm)****Standards and approvals**

Standards IEC/EN 50155

Approvals