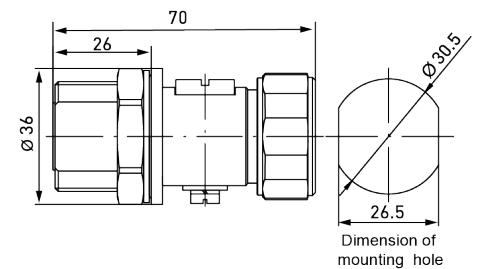




## P8AX50-716/MF

- RF coaxial surge protector
- 43.5 GHz
- 780 W
- Connectors : 7/16
- Low insertion loss
- Removable GDT
- DC-pass
- Bi-directional protection

Electrical Characteristics		
Residual Current <i>Leakage current to Ground</i>	I <sub>pe</sub>	none
Max. discharge current <i>max. withstand @ 8/20 μs by pole</i>	I <sub>max</sub>	20 kA
Max. load current	IL	10A
Protection mode(s)		MC
Protection level <i>@ I<sub>n</sub> (8/20 μs)</i>	U <sub>p</sub>	< 1150 V
Impulse current <i>2 x 10/350 μs Test - D1 Category</i>	I <sub>imp</sub>	1 kA
Nominal discharge current <i>8/20 μs Test x 10 - C2 Category</i>	I <sub>n</sub>	5 kA
Max. frequency	f	DC-3.5GHz
Impedance		50 ohms
Insertion loss		< 0.2dB
Max Power		780 W
Return loss		> 20 dB
VSWR		<1.2:1
Insulation resistance		≥10 GOhms
bandwith limit <i>low</i>	kHz	dc
bandwith limit <i>high</i>	kHz	3500000
Impedance	Ω	50
Insertion loss <i>Maximum</i>	db	<0.2
Return Loss <i>Minimum</i>	db	>20
VSWR <i>Maximum</i>	:1	<1.2:1
Nominal Discharge Current <i>I<sub>n</sub> (8/20 μs x 10)</i>	kA	5
DC Pass		Yes
Connection Method		Series (bi-directional)
End of life		Short-circuit





Mechanical Characteristics	
Technology	Gas discharge tube
Connection to Network	Connector 7/16 Male/Female
Mounting	Feedthrough
Housing material	Brass/Surface plating : Cu Zn Sn
Operating temperature	-40/+85°C
Protection rating	IP66
Failsafe behavior	Short-circuit
Disconnection indicator	transmission interrupt
Spare module	BBHF-500V
Contacts	Bronze/Surface Au-Ag
Insulation material	PTFE
Technology	GDT
Norms	
Standards compliance	IEC 61643-21 / EN 61643-21 / UL497C / UL497E
Code article	
	60407